

VICINITY MAP

CITY OF NAPLES CODE OF ORDINANCES REQUIREMENTS

SECTION 50-74 DEVELOPMENT STANDARDS

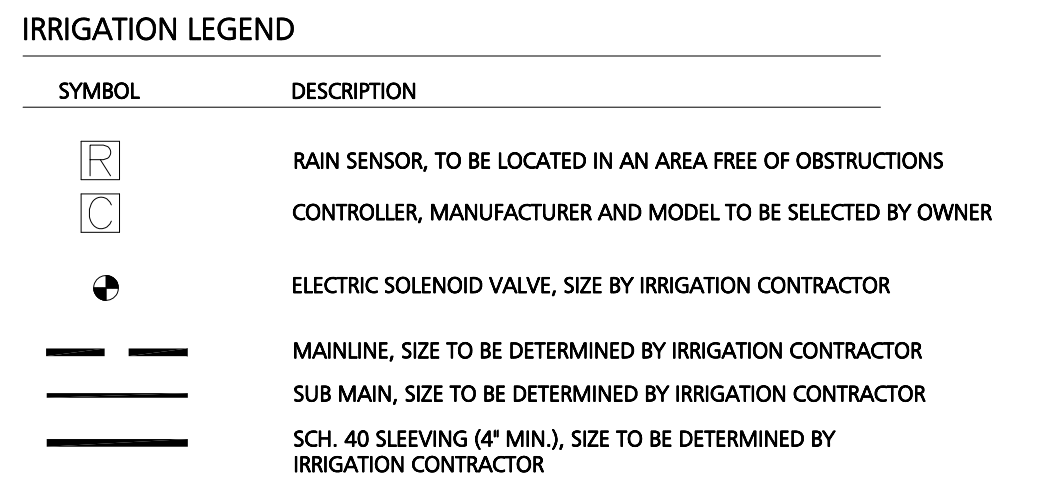
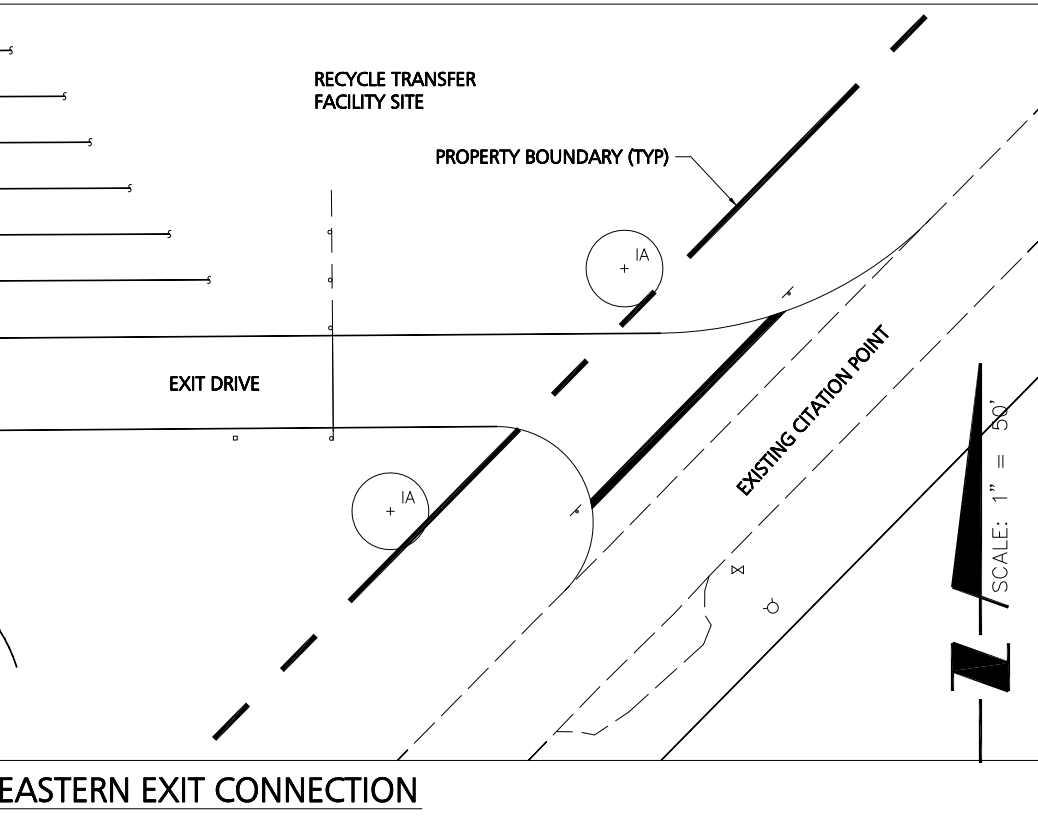
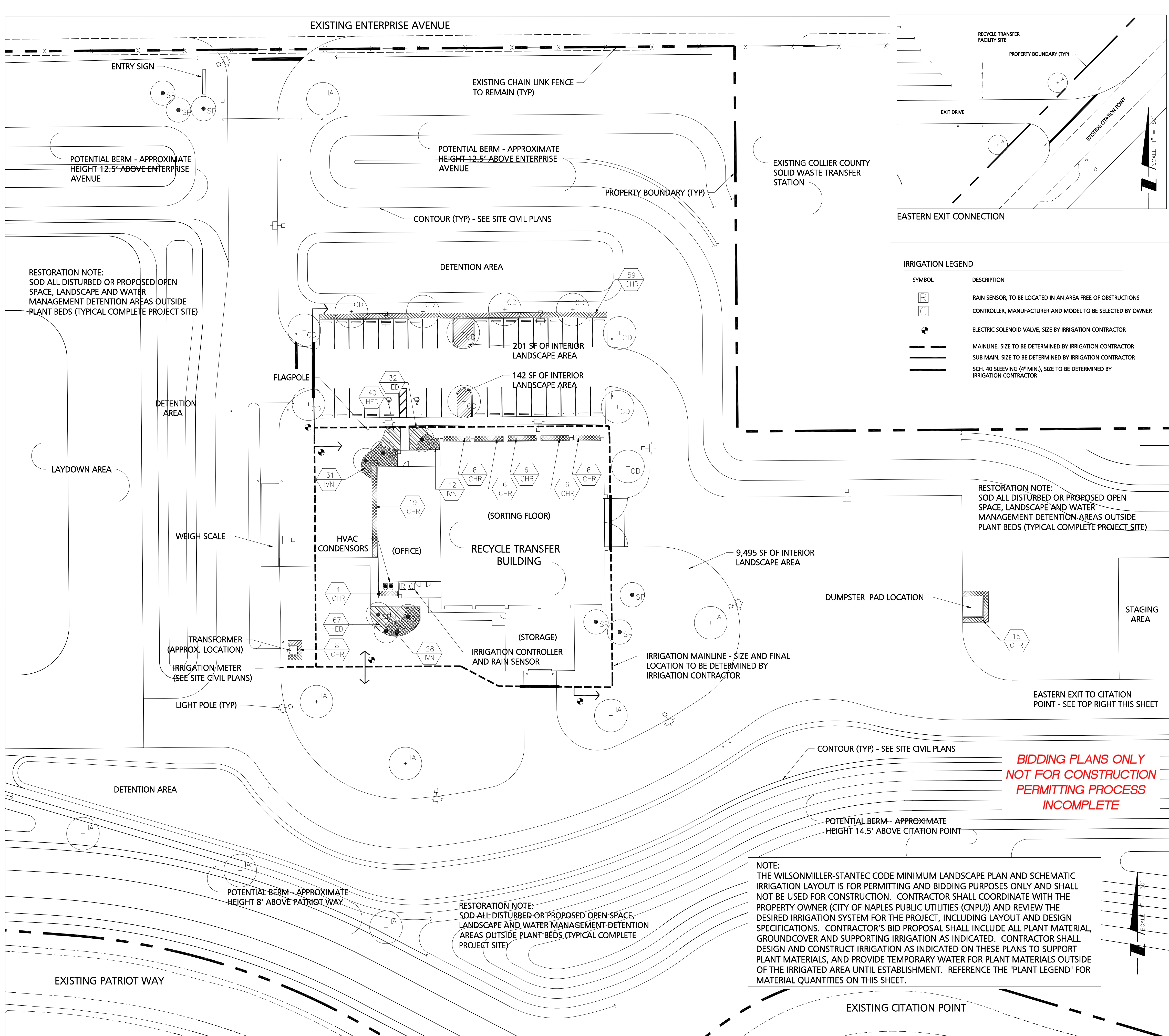
- (b) Vehicular Use Areas Adjacent to ROW
  - 6' wide landscape area to be provided between parking and ROW with 1 tree for each 30 LF and a 2' height hedge
  - 175 LF / 30 = 6 trees required
  - 7 trees provided
  - 175 LF / 3' OC = 59 shrubs provided
- (d) Interior Landscaping for Vehicular Use Areas
  - 20 SF of interior landscape per parking space excluding spaces abutting a perimeter with other requirements
  - 17 spaces x 20 SF = 340 SF of required interior landscape
  - 343 SF provided
  - 2 SF of interior landscape per 100 SF for all other vehicular use areas
  - 73,144 SF of remaining vehicular use area
  - 73,144 / 100 x 2 = 1,463 SF of required interior landscape
  - 1,463 SF minimum provided
  - 1 tree per 100 SF of required interior landscape area
  - 1,463 / 100 = 15 trees required
  - 15 trees provided (Sabal Palms at 3:1)

GENERAL NOTES

- 1) Code required plant material cannot be planted in utility, power, drainage or street easements.
- 2) Plant material layout has been designed in accordance with City of Naples Code of Ordinances. Revisions to the variety of species or locations shall maintain compliance with the codes.
- 3) The WilsonMiller-Stantec Code Minimum Landscape Plan and Schematic Irrigation Layout is for Permitting and Bidding Purposes only and shall not be used for construction. Contractor shall coordinate with the Property Owner (City of Naples Public Utilities (CNPU)) and review the desired irrigation system for the project, including layout and design specifications. Contractor's bid proposal shall include all plant material, groundcover and supporting irrigation as indicated. Contractor shall design and construct irrigation as indicated on these plans to support plant materials, and provide temporary water for plant materials outside of the irrigated area until establishment. Reference the "Plant Legend" for material quantities on this sheet.
- 4) All code required landscape planting shall receive 100% irrigation coverage through automatic system or hand watering until establishment (water supplied by City of Naples).
- 5) Parking lot post lighting shall be located a minimum of 12.5' from the trunk of a tree.
- 6) Contractor shall reference City of Naples Utilities Specifications and Standards Manual (latest approved edition) for installation of landscape materials and irrigation facilities. At a minimum, irrigation system shall be installed in accordance with the latest industry standards and manufacturer's specifications.
- 7) Contractor's bid proposal shall include a one year warranty for plant material and sod covered under automatic irrigation system.
- 8) This irrigation plan is schematic in nature and intended for the approval process only. Reference Note #3.
- 9) Contractor's bid proposal will provide fully automatic irrigation system with a controller and applicable moisture (rain) sensor located to receive direct rainfall. Reference Note #3.
- 10) The number and location of irrigation valves shown on plan may vary. Reference Note #3.
- 11) Valve sizing, detailing and mainline routing may be adjusted by Owner to accommodate the needs of the landscape design. Reference Note #3.
- 12) The irrigation system will be designed to minimize the application of water to impervious areas, adjacent properties and existing vegetation. Reference Note #3.

Plant Legend

Trees/Palms					
QUANTITY	NATIVE	SYM	BOTANICAL NAME	COMMON NAME	SPECIFICATION
10	Y	IA	Ilex x attenuata	East Palatka Holly	10' ht. / 1 3/4" cal. / FL #1
11	Y	CD	Coccoloba diversifolia	Pigeon Plum	10' ht. / 1 3/4" cal. / FL #1/ 5' clear trunk
12	Y	SP	Sabal palmetto	Sabal Palm	Staggered hts. / 8', 10' and 14' CT each cluster
Shrubs/Groundcovers					
QUANTITY	NATIVE	SYM	BOTANICAL NAME	COMMON NAME	SPECIFICATION
135	Y	CHI	Chrysobalanus icaco 'Red Tip'	Red Tip Coccoloba	3 gallon / 24" ht. / 36" OC/ FL#1
139	Y	HED	Helianthus debilis	Beach Sunflower	1 gallon / 24" OC/ FL#1
71	Y	IVN	Ilex vomitoria 'Nana'	Dwarf Yaupon Holly	3 gallon / 36" OC/ FL#1
Misc					
QUANTITY	NATIVE	SYM	BOTANICAL NAME	COMMON NAME	SPECIFICATION
est. 561,784 sf		SOD	Paspalum notatum	Bahia Grass	Sod all disturbed landscape areas outside plant beds
est. 2,860 sf		MULCH	Pine Straw		2" minimum depth



RESTORATION NOTE:  
SOD ALL DISTURBED OR PROPOSED OPEN SPACE, LANDSCAPE AND WATER MANAGEMENT DETENTION AREAS OUTSIDE PLANT BEDS (TYPICAL COMPLETE PROJECT SITE)

EASTERN EXIT TO CITIATION POINT - SEE TOP RIGHT THIS SHEET

NOTE:  
THE WILSONMILLER-STANTEC CODE MINIMUM LANDSCAPE PLAN AND SCHEMATIC IRRIGATION LAYOUT IS FOR PERMITTING AND BIDDING PURPOSES ONLY AND SHALL NOT BE USED FOR CONSTRUCTION. CONTRACTOR SHALL COORDINATE WITH THE PROPERTY OWNER (CITY OF NAPLES PUBLIC UTILITIES (CNPU)) AND REVIEW THE DESIRED IRRIGATION SYSTEM FOR THE PROJECT, INCLUDING LAYOUT AND DESIGN SPECIFICATIONS. CONTRACTOR'S BID PROPOSAL SHALL INCLUDE ALL PLANT MATERIAL, GROUND COVER AND SUPPORTING IRRIGATION AS INDICATED. CONTRACTOR SHALL DESIGN AND CONSTRUCT IRRIGATION AS INDICATED ON THESE PLANS TO SUPPORT PLANT MATERIALS, AND PROVIDE TEMPORARY WATER FOR PLANT MATERIALS OUTSIDE OF THE IRRIGATED AREA UNTIL ESTABLISHMENT. REFERENCE THE "PLANT LEGEND" FOR MATERIAL QUANTITIES ON THIS SHEET.

**BIDDING PLANS ONLY  
NOT FOR CONSTRUCTION  
PERMITTING PROCESS  
INCOMPLETE**



3200 Bailey Lane, Suite 200 Naples, FL 34105-8507  
800.643.4336 • 239.648.4040 • F.239.643.5716  
Certificate of Authorization #A3 • FL Lic. # LC-0000170 • www.stantec.com

CITY OF NAPLES  
CITY OF NAPLES  
RECYCLE TRANSFER FACILITY

PROJECT: CITY OF NAPLES RECYCLE TRANSFER FACILITY  
PROJ START DATE: MAY 2012  
HORIZONTAL SCALE: AS SHOWN  
VERTICAL SCALE: N/A  
CROSS REF. NUMBER:  
WILSONMILLER PROJECT NUMBER: 215610640  
SHEET NUMBER: 1 of 2  
**PRELIMINARY**

